



**ENTRUST**



## Entrust Hardware Tokens

OT, AT, and CR, one-time passwords

One-time password (OTP) tokens provide your organization with a secure and stable authentication solution that authenticates users for only one login session or transaction. By utilizing OTP tokens with your two-factor authentication strategy – combining something you know with something you have – your organization will strengthen endpoint security.

Entrust provides three types of OTP tokens:

- Time-based token (OT) – a new OTP is generated every 30 seconds
- Event-based token (AT) – a new OTP is generated each time the button is pressed
- Challenge-response (CR) token with numeric keypad - PIN protected OTP with challenge response for authentication and transaction signing

### BENEFITS

- Cost-effective – coupled with a competitive pricing policy with no additional reoccurring charges and a long-lasting battery life
- Brand recognition and customization – personalized to your company's branding guidelines and security requirements
- Stronger security – a more secure authentication method than static username and passwords to help protect your network and data
- Better user experience – easy to carry with no external connection
- PSD2 compliance – CR tokens support transaction signing capabilities that meet PSD2 dynamic linking requirements

[LEARN MORE AT ENTRUST.COM](https://www.entrust.com)



# Entrust Hardware Tokens

## Features



### Strong multi-factor authentication

With dynamic password technology – a unique password is generated each time and cannot be reused, without any footprint authentication or software to install on the client side. Plus, with our hardware tokens supported by Entrust Identity, organizations can streamline all authentication operations, such as deployment, provisioning, and maintenance, which significantly reduces IT overhead. Also, with centralized integration and management taking place on the server side, the user experience is simplified, while the administration is reliable and secure.



### Large display screen

The addition of a large LCD screen delivers a crisp and clear image of the number sequence, providing an easily readable data output. Compact and tamper-resistant hardware casing, reinforced by glue injection, eliminates the possibility of damage from water and further protects the onboard clock against harsh temperature conditions to enable easy user storage and management of the module. Enhanced battery life makes OTP tokens a solid investment for years to come.

# TM

### Brand it your way

Our OT and AT tokens provide a one-touch button and our CR token a large button keypad – plus all tokens offer a high-contrast LCD screen and a countdown timing bar. Our OTP tokens are also customizable – customize a 6-or 8-digit passcode with OTP refresh frequency to align with your requirements, and alter end-user packaging, faceplate, and casing to promote your brand.



## Certification and Compliance

- OATH TOTP
- OATH OCRA
- RoHS
- CE
- FCC
- WEEE



# Entrust Hardware Tokens

## Technical Specifications (OT, AT, and CR)

	Entrust OT Token	Entrust AT Token	Entrust CR Token
Weight	14.4 g	14.4 g	16.6 g
Dimensions	Length = 62 mm Width = 29 mm Depth = 11 mm	Length = 62 mm Width = 29 mm Depth = 11 mm	Length = 72.2 mm Width = 46.5 mm Depth = 4 mm
LCD	One row of 8 characters	One row of 8 characters	Two rows of 8 characters
Battery	5 years	5 years	5 years
Endurance	More than 14,000 clicks	More than 14,000 clicks	More than 10,000 clicks
Waterproof	1 meter or more	1 meter or more	1 meter or more
Operating	<ul style="list-style-type: none"> <li>Storage temperature range: -20°C to +70°C</li> <li>Operating temperature range: -10°C to +50°C</li> <li>Maximum relative humidity: 5-90% without condensation</li> </ul>	<ul style="list-style-type: none"> <li>Storage temperature range: -20°C to +70°C</li> <li>Operating temperature range: -10°C to +50°C</li> <li>Maximum relative humidity: 5-90% without condensation</li> </ul>	<ul style="list-style-type: none"> <li>Storage temperature range: -20°C to +70°C</li> <li>Operating temperature range: -10°C to +50°C</li> <li>Maximum relative humidity: 5-90% without condensation</li> </ul>
Algorithm	OATH Time-based OTP (TOTP)	OATH Time-based OTP (TOTP) with additional event counter included	For OTP: OATH Time-based OTP (TOTP) For challenge/response: OATH compliant OCRA (challenge/response, signature, unlock)

Notes:

Standards compliance: The Entrust OTP tokens comply with the following standards:

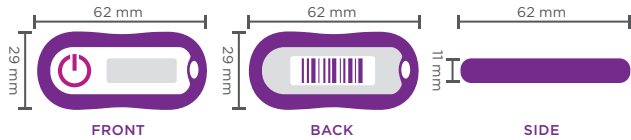
OATH TOTP, OATH OCRA, RoHS, FCC, CE, WEEE

\*Features vary according to product model

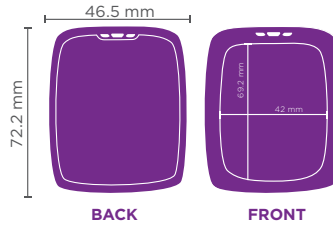


# Entrust Hardware Tokens

## OT and AT Casing Specifications



## CR Casing Specifications



Dimension	Weight	Color	Material	Faceplate
62x29x11 mm	14.4 g	Blue	ABS+PC	
Serial Number		Customization		
Bar code and serial number are found on back side under the faceplate		Customizable change to: 6- or 8-digit passcode Faceplate text and color * Casing color * Serial number * Industrial and end-user packaging * * Requires minimum purchase volume		

Dimension	Weight	Color	Material	Faceplate
72.2x46.5x4 mm	16.6 g	Black	ABS+PC	
Serial Number		Customization		
Bar code and serial number are found on back side under the faceplate		Customizable change to: 6- or 8-digit passcode Faceplate text and color * Casing color * Industrial and end-user packaging * * Requires minimum purchase volume		

## ABOUT ENTRUST CORPORATION

Entrust keeps the world moving safely by enabling trusted identities, payments, and data protection. Today more than ever, people demand seamless, secure experiences, whether they're crossing borders, making a purchase, accessing e-government services, or logging into corporate networks. Entrust offers an unmatched breadth of digital security and credential issuance solutions at the very heart of all these interactions. With more than 2,500 colleagues, a network of global partners, and customers in over 150 countries, it's no wonder the world's most entrusted organizations trust us.

Learn more at  
[entrust.com](https://www.entrust.com)



Global Headquarters  
1187 Park Place, Minneapolis, MN 55379  
U.S. Toll-Free Phone: 888 690 2424  
International Phone: +1 952 933 1223  
[info@entrust.com](mailto:info@entrust.com) [entrust.com/contact](https://www.entrust.com/contact)