

Adaptive Issuance™ Job Enable & Data Access Software

Drive Operational Efficiency in Your Issuance Environment

Adaptive Issuance™ Job Enable and Data Access Software empowers issuers to implement customized issuance applications to optimize operational efficiency and reduce costs while ensuring data security. From issuance of payment cards to identity credentials, Job Enable and Data Access harnesses the power of your issuance data, giving you the flexibility to respond to increasing complexities and new challenges in your issuance environment. Designed on a universal platform, this software works seamlessly with your proven Entrust issuance system.

Expansive Capabilities - Job Enable and Data Access Software create exciting new opportunities for adapting hardware and software to perform tasks that fall outside the conventional feature set - from automation to powerful reporting capabilities.

Cost-Effective Customization Leveraging Proven Technology - A single, easy-to-use interface enables you to create a variety of customized applications using your proven Datacard® issuance systems, while also taking advantage of the controller software. This seamless integration of custom capabilities reduces time and cost compared to conventional custom applications as well as future maintenance.

Comprehensive, Modular Suite - Adaptive Issuance™ Suite Software is a complete suite of modular interfaces that can be optimized for specific operational functions, depending on your needs.

Strong Technology Investment Protection - Migrate to new technology and systems without changing your existing processes, and quickly scale from workstation-specific to enterprise-wide applications. Custom applications developed with the Adaptive Issuance™ Suite of software are much more robust than conventional custom applications, so customers can create an application once and use it often.

Enhanced Security Options - Create custom applications that encrypt or decrypt sensitive data during the production run to secure your systems and mitigate the growing risk of data breaches.

Trusted Partner - Developed by the same engineers that work on the systems it supports and bundled with 1:1 consultation with industry experts. Get your operation running at top efficiency with ease and confidence.

Powerful Flexibility

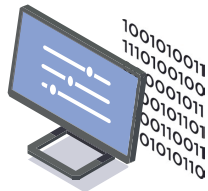
- Easily implement new operational strategies
- Cost-effective application customization and development
- Deploy new software without interoperability concerns when introducing unique systems
- Add new capabilities to proven hardware platforms with seamless upgrades
- Enhance data security on the production floor



Automatically load and remove production jobs to boost throughput



Automatic job start increases security in issuance production by removing job start at the operator level



Monitor system and job status and retrieve production statistics in real-time



Dashboard integrates with a centralized production management system



Job Enable Software

Job Enable Software provides an interface that enables you to automate daily tasks, reduce operator intervention, and streamline operations in your issuance environment. Users can develop custom applications using standard Microsoft Windows development tools – and use those custom applications across a wide range of Datacard® issuance systems.

Extremely Efficient

Provides you the capability to automatically load and remove production jobs to reduce operator intervention.

Highly Secure

Provides capabilities from the central server to increase security in issuance production by removing job start at the operator level.

Supervision

Capability to monitor your central issuance system and job status and retrieve production statistics in real-time.

Applications Supported

Any application developed using the Adaptive Issuance™ Job Enable SDK.



**On-demand data decryption
at time of production**



**On-demand data fetching to achieve
centralized data management**



**On-demand data generation for image
composition or form data generation**



**On-demand data processing
for inline quality check**



Data Access

Data Access Software provides the platform for users to execute custom applications that access and act on the production data of an issuance system – as well as providing audit processing. Data Access supports a wide range of data to provide developers with a vast array of useful options.

Highly Secure

Provides a framework to implement data decryption on-demand at the time of production for central issuance machines.

Adaptable

From the central server provides capabilities to manipulate issuance data to respond to your unique environment needs.

Traceability

Provides the capability to perform Custom Audit Data management.

Applications Supported

Any applications developed using Adaptive Issuance™ Data Access SDK.

Data Supported

Magnetic stripe, smart card, bar code, optical, and other personalized data.

System Requirements	Controller System Requirements
<ul style="list-style-type: none"> • 2.58 GHz or faster 64-bit (x64) processor • 4 GB RAM • Minimum screen resolution of 1280 x 1024 <p>A minimum of 2 GB free hard drive space is required for the installation of the program, initial database files, and running the program. Any additional hard drive capacity requirements need to be assessed based on how the software is used.</p> <p>The system configuration may need to be adjusted depending upon the number of personalization system equipment and the smart card application profile.</p>	<ul style="list-style-type: none"> • Datacard® MX9100™, MX8100™, MX6100™, MX2100™, MX1100™ Card Issuance Systems, Datacard® PB8500™ Passport Issuance System, Datacard® PB6500™ Passport Issuance Systems: Requires controller software versions 6.10 or higher version to use Adaptive Issuance Suite • Datacard® MPR3800™ GSM Card Issuance System: Requires 6.10 or higher version to use Adaptive Issuance Suite

Platforms Supported

Operating System	Browser	Database
<ul style="list-style-type: none"> • Windows 10 (64 bit) • Windows Server 2012 R2 • Windows Server 2016 • Windows Server 2019 	<ul style="list-style-type: none"> • Internet Explorer 10 or Higher • Google Chrome • Microsoft Edge 	<ul style="list-style-type: none"> • SQL Server 2016 • SQL Server 2016 Express • SQL Server 2017 • SQL Server 2017 Express • SQL Server 2019 • SQL Server 2019 Express