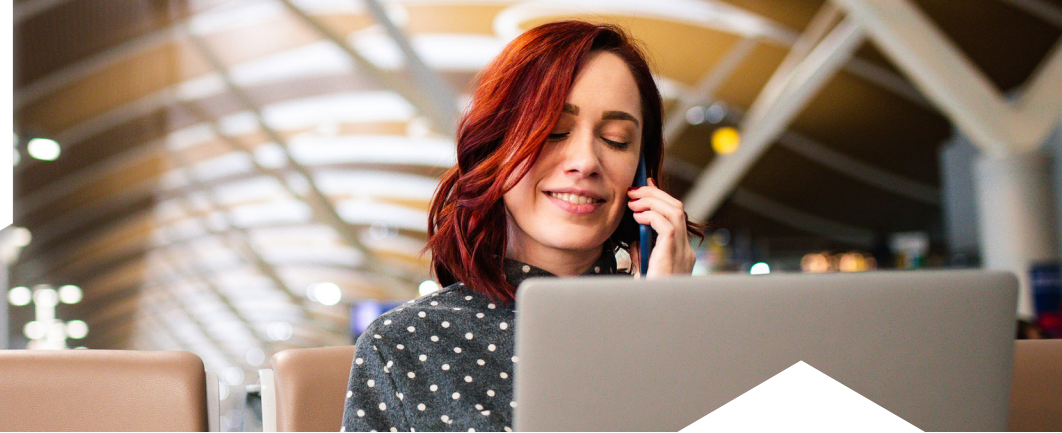




**ENTRUST**



# Entrust Identity as a Service

All of your users. Endless possibilities in the cloud.

## HIGHLIGHTS

### Cloud-based Identity and Access Management (IAM)

Entrust Identity as a Service (IDaaS) enables trusted identities for workforces, consumers, and citizens so they can engage securely and seamlessly with your organization. Our intelligent IAM platform lets you implement a Zero Trust approach, providing user authentication, authorization, and access control to the right resources anytime anywhere.

**93%**

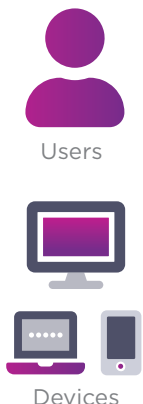
of our customers state that they would recommend Entrust Identity to others.

**91%**

rate Entrust Identity's after-purchase support as valuable to their organization.

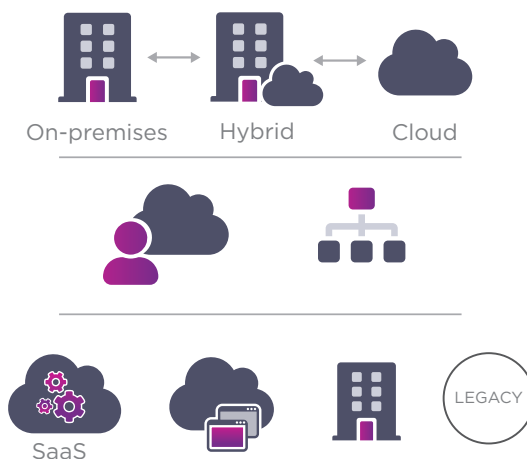
TechValidate, Customer Survey, 2020

## One Platform for All IAM Needs



### Identity As A Service

- Authentication and authorization
- Access management
- Identity provisioning
- Identity lifecycle management
- Threat detection and continuous monitoring



Learn more at [entrust.com/identity-as-a-service](https://entrust.com/identity-as-a-service)



# Entrust Identity as a Service

## KEY CAPABILITIES



### Best-in-class multi-factor authentication (MFA)

Support for an unrivaled number of authenticators and use cases.



### High assurance credential-based access

Option to use digital certificates for a higher level of security via mobile app or hard token/USB key.



### Single sign-on (SSO)

One set of credentials to securely access any app (cloud or on-premises), while also making it easy for IT teams to securely manage user credentials. Entrust Identity as a Service federates with cloud apps via standards like SAML and OIDC.



### Passwordless access

Credential-based/FIDO-compliant passwordless access with SSO for high assurance workforce use cases. Passwordless options for consumers include using smartphone biometrics or FIDO tokens with BYODs.



### Identity orchestration

Unify user registration via IDaaS and/or third-party identity providers (IDPs) including social logins to simplify authentication and authorization across multiple IDPs. This is especially critical in hybrid/multi-cloud environments.



### Authorization and access management

Leverage built-in role-based access control (RBAC) to apply privileges that conform to a person's role versus establishing and managing user permissions individually. Map directory groups (AD or any LDAP source) to roles easily to ensure secure access to any of your privileged cloud applications.



### URL/API protection

Secure your digital ecosystem with OAuth 2.0/2.1 contextual authorization and access controls and integrated OIDC-based user authentication.



### Embedded device app authentication and authorization

Provide input-constrained devices with IDaaS' device authorization flow so they can be easily authenticated and authorized.



# Entrust Identity as a Service

## KEY CAPABILITIES



### **Adaptive risk-based access and authentication**

Apply contextual authentication with a step-up user challenge only when conditions warrant, like a user logging in for the first time from a new device, or at an abnormal time of day or from a different geolocation.



### **Email and file encryption, document signing**

Enterprise mobility management (EMM) vendor integrations including Microsoft, IBM, MobileIron and VMware support secure workplace communications with email encryption, file encryption, and document signing.



### **Identity proofing**

Optional integration to support self-service digital identity verification for fast, secure remote onboarding of consumers, citizens, or employees.



### **Fraud detection and prevention**

Non-intrusively detect user behavioral and environmental anomalies while protecting consumers from credential-stealing attacks, impersonation attacks, and computer/session takeover attacks.



### **Secure portals**

Ensure secure access to consumer and partner portals.



### **Self-service password resets**

Have users securely reset their own passwords, meaning no downtime and no IT overhead.



### **Off-the-shelf integrations, APIs, and developer toolkits**

Take advantage of SAML and OIDC for identity federation, RESTful APIs, and a comprehensive list of available integrations. Embed digital identity directly into your applications and brand as your own if desired with our mobile SDK. Develop your own passwordless and document signing applications with our mobile smart credential (MSC) SDK.



### **Available as a managed service**

Opt to deploy IDaaS in the cloud yourself or as a managed service by working with one of our certified Managed Service Provider (MSP) partners.



# Entrust Identity as a Service

## BENEFITS

### Realize Zero Trust

Keep identities secure, apply adaptive risk-based authentication and protect URL/APIs.

### Unburden IT

Streamline user provisioning, simplify identity management, and take advantage of user self-service tools. Opt to deploy IDaaS yourself or as a managed service.

### Improve user experience

Limit user friction with adaptive risk-based authentication, passwordless login, identity proofing, and cloud app federation.

### Facilitate compliance

Safeguard user identities and data privacy.

### Deploy, manage, and scale easily

Leverage available APIs, OTS integrations, and SDKs.

### Future proof

With capabilities like adaptive risk-based MFA, high assurance passwordless access, identity orchestration, and access management controls, IDaaS provides comprehensive security for all of your existing and future use cases from one platform.

Whether you want to protect sensitive healthcare information, prevent financial fraud, or ensure secure access to government services, our IAM platform will support you.

[Get started for free today.](#)

## ABOUT ENTRUST CORPORATION

Entrust secures a rapidly changing world by enabling trusted identities, payments, and data protection. Today more than ever, people demand seamless, secure experiences, whether they're crossing borders, making a purchase, accessing e-government services, or logging into corporate networks. Entrust offers an unmatched breadth of digital security and credential issuance solutions at the very heart of all these interactions. With more than 2,500 colleagues, a network of global partners, and customers in over 150 countries, it's no wonder the world's most entrusted organizations trust us.



Learn more at  
[entrust.com](https://www.entrust.com)



**ENTRUST**

Global Headquarters  
1187 Park Place, Minneapolis, MN 55379  
U.S. Toll-Free Phone: 888 690 2424  
International Phone: +1 952 933 1223