



**Datacard[®] CardWizard[®] Issuance Software
and Card Printer**

Setup Guide

October 2016

Part No. 527793-002, Rev. A

Notice

Please do not attempt to operate or repair this equipment without adequate training. Any use, operation or repair you perform that is not in accordance with the information contained in this documentation is at your own risk.

This publication and the accompanying software are proprietary to Entrust Datacard Corporation and are protected by U.S. patent and/or copyright laws, as well as various international laws and treaties.

This publication may not be copied, translated, sold, or otherwise transferred to a third party, in whole or in part, without the express written permission of Entrust Datacard Corporation.

Information in this publication is subject to change without notice. Entrust Datacard Corporation assumes no responsibility for any errors that may appear in this publication.

Names and logos in sample screens are fictitious. Any similarity to actual names, trademarks, or trade names is coincidental.

Trademark Acknowledgments

Datacard is a registered trademark and service mark, CardWizard is a registered trademark, and CR825, CE875, CD820, CE870, and CR500 are trademarks of Entrust Datacard Corporation in the United States and other countries.

MasterCard is a registered trademark of MasterCard International Incorporated.

Visa is a registered trademark of Visa International Service Association.

All other product names are the property of their respective owners.

Proprietary Notice

The design and information contained in these materials are protected by US and international copyright laws.

All drawings and information herein are the property of Entrust Datacard Corporation. All unauthorized use and reproduction is prohibited.

Entrust Datacard
1187 Park Place
Shakopee, MN 55379
Phone: 952-933-1223
Fax: 952-933-7971
www.entrustdatacard.com

Copyright © 2016 Entrust Datacard Corporation. All rights reserved.

Compliance Statements

Liability

The WARNING and CAUTION labels have been placed on the equipment for your safety. Please do not attempt to operate or repair this equipment without adequate training. Any use, operation, or repair in contravention of this document is at your own risk.

Safety

The following basic safety tips are given to ensure safe installation, operation, and maintenance of Entrust Datacard™ equipment.

- Connect equipment to a grounded power source. Do not defeat or bypass the ground lead.
- Place the equipment on a stable surface (table) and ensure floors in the work area are dry and non-slip.
- Know the location of equipment branch circuit interrupters or circuit breakers and how to turn them on and off in case of emergency.
- Know the location of fire extinguishers and how to use them. ABC type extinguishers may be used on electrical fires.
- Know local procedures for first aid and emergency assistance at the customer facility.
- Use adequate lighting at the equipment location.
- Maintain the recommended temperature and humidity range in the equipment area.

Regulatory Compliance

EMC Compliance Notice

To ensure compliance of the model RX10 retransfer printer to the radiated emissions requirements for class "A" Information Technology Equipment, be sure to use a shielded Ethernet cable when connecting to your network

Notice for USA (FCC Notice)

This equipment has been tested and found to comply with the limits for Class A computing devices, pursuant to Part 15 of FCC rules. These limits are designed to provide reasonable protection against harmful interference when the equipment is operated in a commercial environment. This equipment generates, uses, and can radiate radio frequency energy. If this equipment is not installed and used in accordance with this instruction manual, it may cause harmful interference to radio communications. Operation of this equipment in a residential area is likely to cause harmful interference in which case the user will be required to correct the interference at their own expense. Changes or modifications not expressly approved by the party responsible for compliance could void the user's authority to operate the equipment.

This device complies with Part 15 of the FCC Rules. Operation is subject to the following two conditions: (1) This device may not cause harmful interference, and (2) this device must accept any interference received, including interference that may cause undesired operation.

Notice for Canada

Industry Canada

This digital apparatus does not exceed the Class A limits for radio noise for digital apparatus set out in the Radio Interference Regulations of the Canadian Department of Communications.

Le présent appareil numérique n'émet pas de bruits radioélectriques dépassant les limites applicables aux appareils numériques de la classe A prescrites dans le Règlement sur le brouillage radioélectrique édicté par le ministère des Communications du Canada.

RSS-Gen, Issue 3, December 2010, Section 7.1.3 User Manual Notice

This Device complies with Industry Canada License-exempt RSS standard(s). Operation is subject to the following two conditions: 1) this device may not cause interference, and 2) this device must accept any interference, including interference that may cause undesired operation of the device.

Cet appareil est conforme avec Industrie Canada RSS standard exemptes de licence(s). Son fonctionnement est soumis aux deux conditions suivantes: 1) ce dispositif ne peut causer des interférences, et 2) cet appareil doit accepter toute interférence, y compris les interférences qui peuvent causer un mauvais fonctionnement du dispositif.

Notice for Europe

The EU Declaration of Conformity can be found on EntrustDatacard.com

WARNING: This is a class A product. This equipment is compliant with class A of either CISPR32 or CISPR22. In a domestic/residential environment this equipment may cause radio interference, in which case the user may be required to take adequate measures.

WEEE: The model RX10 retransfer printer uses a lithium coin cell battery. Refer to the service manual for battery removal instructions.

Notice for Australia

This is a Class A product. In a domestic environment this product may cause radio interference, in which case the user may be required to take adequate measures.

Notice for China (Simplified Chinese)

警告

此为 A 级产品，在生活环境中，该产品可能会造成无线电干扰。在这种情况下，可能需要用户对干扰采取切实可行的措施。

Notice for Taiwan (Traditional Chinese)

警告使用者：
這是甲類的資訊產品，在居住的環境中使用時，可能會造成射頻干擾，在這種情況下，使用者會被要求採用某些適當的對策。

Notice for Japan

Japanese Voluntary Control Council for Interference (VCCI) class A statement

この装置は、クラス A 情報技術装置です。この装置を家庭環境で使用すると電波妨害を引き起こすことがあります。この場合には使用者が適切な対策を講ずるよう要求されることがあります。

VCCI-A

Korea Communications Commission (KCC) statement

이 기기는 업무용(A급)으로 전자파적합기기로서 판매자 또는 사용자는 이 점을 주의하시기 바라며, 가정외의 지역에서 사용하는 것을 목적으로 합니다.

California Proposition 65 Compliance

WARNING: This product contains chemicals, including lead, known to the State of California to cause cancer, and birth defects or other reproductive harm. *Wash hands after handling.*

Entrust Datacard believes that its products are not harmful when used as designed. However, the above warning is made in compliance with the State of California Safe Drinking Water and Toxic Enforcement Act of 1986, which requires warning labels on products that may contain elements that the State of California considers harmful.

California Lithium Perchlorate Warning

Perchlorate Material - special handling may apply. See www.dtsc.ca.gov/hazardouswaste/perchlorate.

This notice is required by California Code of Regulations, Title 22, Division 4.5, Chapter 33: Best Management Practices for Perchlorate Materials. This product/part includes a battery that contains Perchlorate material.

Revision Log
CardWizard Issuance Software and
Card Printer Setup Guide

Revision	Date	Description of Changes
A	October 2016	First release of this document

Contents

Chapter 1: Introduction	1
About This Manual	1
Conventions Used in This Document	1
Related Resources	2
Support and Service Resources	2
Chapter 2: CR825 and CE875 Instant Issuance Systems	3
Set Up CardWizard Issuance Software	3
Chapter 3: CD820 Instant Issuance System	7
Set Up CardWizard Issuance Software	7
Chapter 4: CE870 Instant Issuance System	11
Set Up CardWizard Issuance Software	11
Chapter 5: CR500 Instant Issuance System	15
Set Up CardWizard Issuance Software	15
Chapter 6: Server Schedule	19
Power Save Mode	19

Chapter 1: Introduction




This manual describes how to define desktop card printers to Datacard® CardWizard® Issuance Software.

About This Manual

This manual describes how to define the following printers to CardWizard software using CardWizard Administrator.

- Entrust Datacard™ CR825™ and CE875™ Instant Issuance System
- Datacard® CD820™ Instant Issuance System
- Datacard® CE870™ Instant Issuance System
- Datacard® CR500™ Instant Issuance System

Conventions Used in This Document

Bold type	Names of menus, dialog box options, and buttons appear in bold type. File names also appear in bold type, and the variable part of the file name is in bold italics (for example, <i>profile name.xml</i> indicates that you supply the profile name while xml remains constant).
Blue text	Blue text indicates a jump (link) to the referenced topic for online reading.
	Notes remind or inform you of something you should know before you proceed.

Related Resources

Manual Title	Part Number
<i>CR825 and CE875 Instant Issuance System Installation and Administrator's Guide</i>	527748-001
<i>CD820 Card Printer Installation and Administrator's Guide</i>	527444-002
<i>CE870 Instant Issuance System Installation and Administrator's Guide</i>	527263-001
<i>CR500 Instant Issuance System Installation and Administrator's Guide</i>	527516-001
<i>CardWizard Issuance Software Installation Manual</i>	527632-001
<i>CardWizard Issuance Software Administrator User Manual</i>	527122-002

Support and Service Resources

For CardWizard software assistance and questions, contact Entrust Datacard CardWizard Support. Support hours are 7AM to 7PM CT, Monday through Friday.

CustomerSupport_Issuance@Datacard.com

1-800-568-4598

For other software and hardware questions, go to entrustdatacard.com/support or the Release Notes for information about getting support in your region. For hardware support, have your product model and serial number available. For software support, have the software version number and product key available. Refer to the shipping documents or the software to retrieve this information.



Chapter 2: CR825 and CE875 Instant Issuance Systems

2

This chapter provides instructions to define the CR825™ and CE875™ Instant Issuance System to Datacard® CardWizard® Issuance Software.

Set Up CardWizard Issuance Software

To use the CR825 or CE875 instant issuance system with CardWizard software, you must define the printer using CardWizard Administrator.

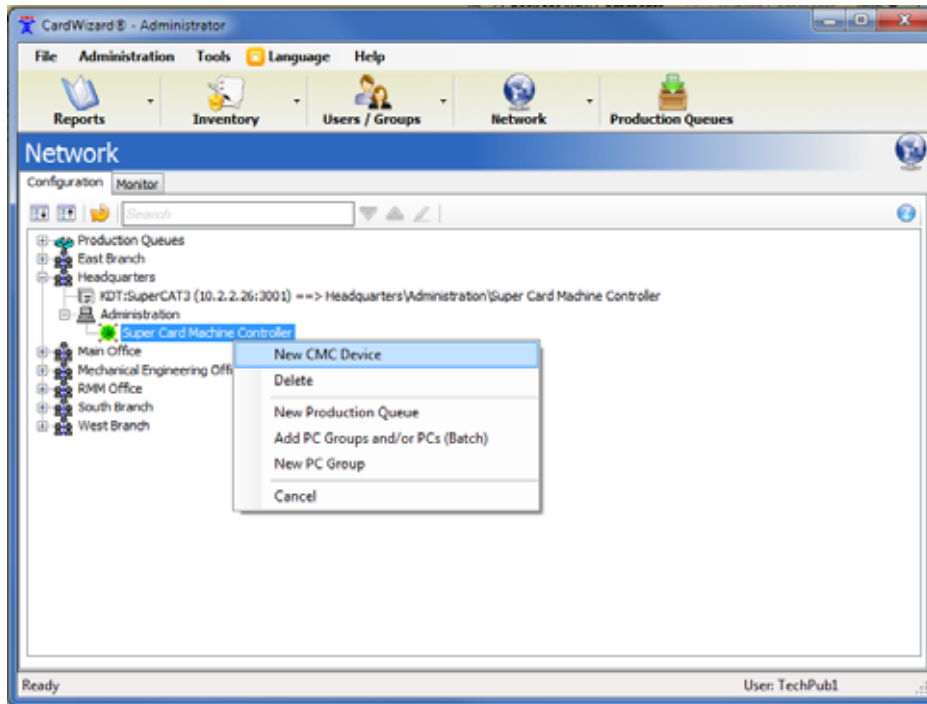
Before adding the CR825 or CE875 system to the CardWizard network, make sure that you have met the following requirements:

- The IP address method is set to Static and the IP address, subnet mask, and gateway address have been entered. Refer to “Set a Static IP Address” in the printer’s *Installation and Administrator’s Guide*. Have the IP address available during setup.
- The magnetic stripe coercivity is set to High (HICO). Refer to “MagStripeGeneral” in the Printer Manager section of the printer’s *Installation and Administrator’s Guide*.
- The PC Group has been configured using CardWizard Administrator. Refer to your CardWizard documentation for more information.

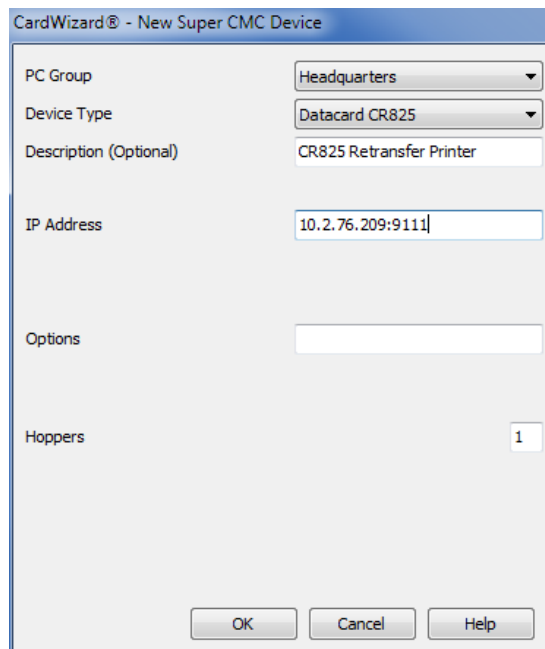
Do the following to add the printer to the CardWizard network:

1. Start CardWizard Administrator.
2. Select **Network > Configuration**.
3. Expand the PC Group where the CardWizard server is located.
4. Expand the PC Name where the CMC for the CardWizard server is located.

5. Under the PC Name, right-click **Super Card Machine Controller** and select **New CMC Device**.



The CardWizard **New SuperCMC Device** dialog box displays.

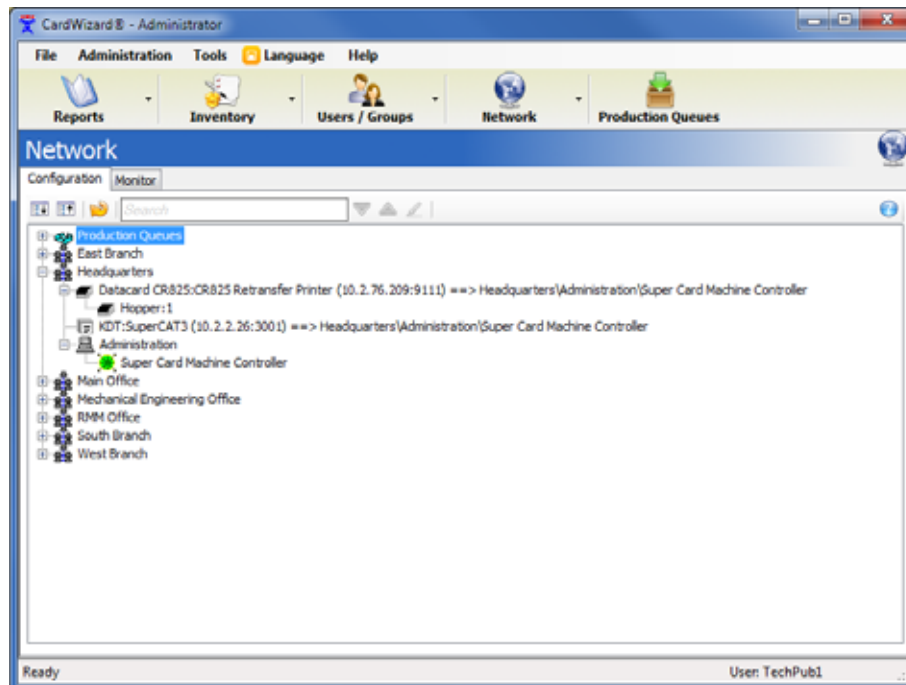


6. Specify the following information.

PC Group	Select the PC Group (branch) to which you want to add the printer.	
Device Type	Select Datacard CR825 or Datacard CE875 from the list.	
Description	Enter a brief description for the printer. The description is used in the network diagram. This field is optional.	
IP Address	Enter the static IP address of the printer. Include the port number, using the format: x.x.x.x:9111. For example, 123.45.6.78:9111. (The printer uses the secure port 9111.)	
Options	You can enter the following additional option for the printer. This field is optional.	
	<table border="1"> <tr> <td>Smart Card</td> <td>Enter the IP address and port of the smart card reader. The IP address and port are the same as that of the printer. For example, enter the smart card option as follows: DC1WIRE=123.45.6.78:9111.</td> </tr> </table>	Smart Card
Smart Card	Enter the IP address and port of the smart card reader. The IP address and port are the same as that of the printer. For example, enter the smart card option as follows: DC1WIRE=123.45.6.78:9111.	
Hoppers	The number of input hoppers installed on the printer. The default is 1.	

7. Click **OK** to add the printer to the PC Group.

The new printer displays under the PC group.





If you modify a printer option after the printer has been added to the PC group, you must restart the printer to activate the setting. Select **Network > Monitor > Devices** and click **Restart**.

8. Refer to your CardWizard documentation for complete information about how to define card formats and print cards.



You can use the CardWizard Server Schedule to manage the power save function in the printer. Refer to [Chapter 6: "Server Schedule"](#) for information about setting up the server schedule.



Chapter 3: CD820 Instant Issuance System

3

This chapter provides instructions to define the Datacard® CD820™ Instant Issuance System to Datacard® CardWizard® Issuance Software.

Set Up CardWizard Issuance Software

To use the CD820 printer with CardWizard software, you must define the printer using CardWizard Administrator.

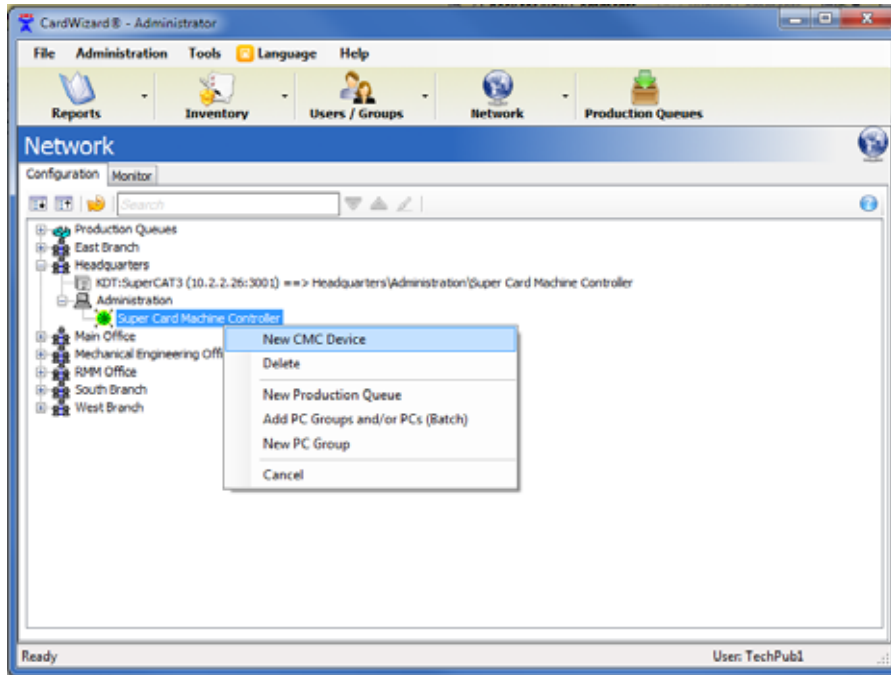
Before adding the CD820 printer to the CardWizard network, make sure that you have met the following requirements:

- The IP address method is set to Static and the IP address, subnet mask, and gateway address have been entered. Refer to “Set a Static IP Address” in the printer’s *Installation and Administrator’s Guide*. Have the IP address available during setup.
- The magnetic stripe coercivity is set to High (HICO). Refer to “MagStripeGeneral” in the Printer Manager section of the printer’s *Installation and Administrator’s Guide*.
- The PC Group has been configured using CardWizard Administrator. Refer to your CardWizard documentation for more information.

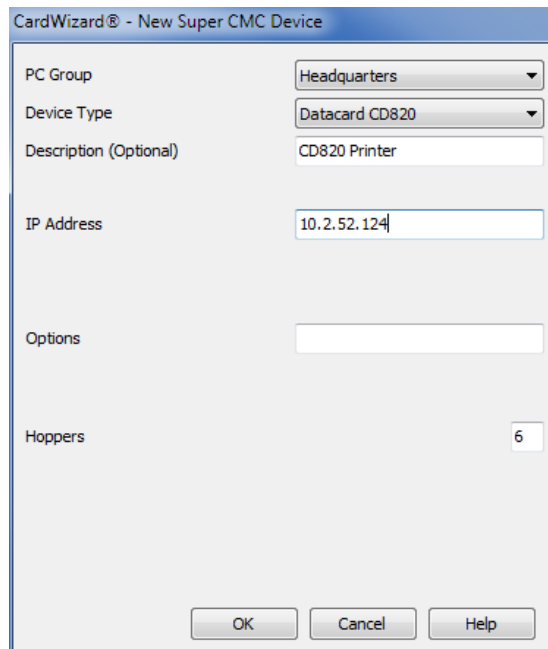
Do the following to add the printer to the CardWizard network:

1. Start CardWizard Administrator.
2. Select **Network > Configuration**.
3. Expand the PC Group where the CardWizard server is located.
4. Expand the PC Name where the CMC for the CardWizard server is located.

5. Under the PC Name, right-click **Super Card Machine Controller** and select **New CMC Device**.



The CardWizard **New SuperCMC Device** dialog box displays.



6. Specify the following information.

PC Group	Select the PC Group (branch) to which you want to add the CD820 printer.		
Device Type	Select Datacard CD820 from the list.		
Description	Enter a brief description for the printer. The description is used in the network diagram. This field is optional.		
IP Address	Enter the static IP address of the printer. Include the port number, using the format: x.x.x.x:9111. For example, 123.45.6.78:9111. (The printer uses the secure port 9111.)		
Options	<p>You can enter the following additional options for the printer. This field is optional.</p> <table border="1"> <tr> <td>Ribbon Management Code</td> <td> <p>You can specify one of the following ribbon management codes to manage print ribbon use.</p> <p>Note: The card format may include a ribbon usage option that allows you to define the ribbon use. If a ribbon usage is not specified, the ribbon management code entered here is used.</p> <ul style="list-style-type: none"> • CB—Limits ribbon use to one panel set for YMCKT-K and YMCKT-KT ribbons. The printer uses the color (YMC), black (K), and topcoat (T) panels on the front of the card. All graphics and text on the back of the card print using the black (K) panel. Topcoat is applied on the back of the card if it is available in the panel set. This is the default setting. • AA—Allows any type of printing on both the front and back of the card. Both sides of the card can use the YMC, K, and T panels. Specify this option when printing color on the back of the card. This option uses more than one panel set of the ribbon. </td> </tr> </table>	Ribbon Management Code	<p>You can specify one of the following ribbon management codes to manage print ribbon use.</p> <p>Note: The card format may include a ribbon usage option that allows you to define the ribbon use. If a ribbon usage is not specified, the ribbon management code entered here is used.</p> <ul style="list-style-type: none"> • CB—Limits ribbon use to one panel set for YMCKT-K and YMCKT-KT ribbons. The printer uses the color (YMC), black (K), and topcoat (T) panels on the front of the card. All graphics and text on the back of the card print using the black (K) panel. Topcoat is applied on the back of the card if it is available in the panel set. This is the default setting. • AA—Allows any type of printing on both the front and back of the card. Both sides of the card can use the YMC, K, and T panels. Specify this option when printing color on the back of the card. This option uses more than one panel set of the ribbon.
Ribbon Management Code	<p>You can specify one of the following ribbon management codes to manage print ribbon use.</p> <p>Note: The card format may include a ribbon usage option that allows you to define the ribbon use. If a ribbon usage is not specified, the ribbon management code entered here is used.</p> <ul style="list-style-type: none"> • CB—Limits ribbon use to one panel set for YMCKT-K and YMCKT-KT ribbons. The printer uses the color (YMC), black (K), and topcoat (T) panels on the front of the card. All graphics and text on the back of the card print using the black (K) panel. Topcoat is applied on the back of the card if it is available in the panel set. This is the default setting. • AA—Allows any type of printing on both the front and back of the card. Both sides of the card can use the YMC, K, and T panels. Specify this option when printing color on the back of the card. This option uses more than one panel set of the ribbon. 		

Options	Hopper Groups	<p>This applies only to printers with a multi-hopper. Use a hopper group when you load the same card stock into multiple input hoppers. CardWizard software can use all the grouped hoppers without relinking card formats.</p> <ul style="list-style-type: none"> • Cards are picked from the hoppers in the group in the order that the hoppers are listed in the group definition. • After a card is picked, the next card is picked from the next hopper in the group. • Empty hoppers in a group are skipped. If all the hoppers in a group are empty, an error is issued. • To define a hopper group to a card format, link the card format to any hopper in that group. • A hopper that is not defined as part of a group operates as a single, ungrouped hopper. <p>Define a hopper group as follows:</p> <ul style="list-style-type: none"> • (1,2,4, 5)—Defines a group with hoppers 1, 2, 4, and 5. Hoppers 3 and 6 are ungrouped hoppers. • (1,2,3)(4, 5,6)—Defines one group with hoppers 1, 2, and 3 and a second group with hoppers 4, 5, and 6.
	Smart Card	<p>If your printer includes a smart card reader, enter the IP address and port of the reader. The IP address and port are the same as that of the printer. For example, enter the smart card option as follows: DC1WIRE=123.45.6.78:9111.</p>
Hoppers	Enter the number of input hoppers installed on the printer.	



If you specify a ribbon management code, hopper groups, and a smart card option, always enter the smart card entry last.

7. Click **OK** to add the printer to the PC Group.



If you modify a printer option after the printer has been added to the PC group, you must restart the printer to activate the setting. Select **Network > Monitor > Devices** and click **Restart**.

8. Refer to your CardWizard documentation for complete information about how to define card formats and print cards.



Chapter 4: CE870 Instant Issuance System

4

This chapter provides instructions to define the Datacard® CE870™ Instant Issuance System to Datacard® CardWizard® Issuance Software.

Set Up CardWizard Issuance Software

To use the CE870 system with CardWizard software, you must define the printer using CardWizard Administrator.

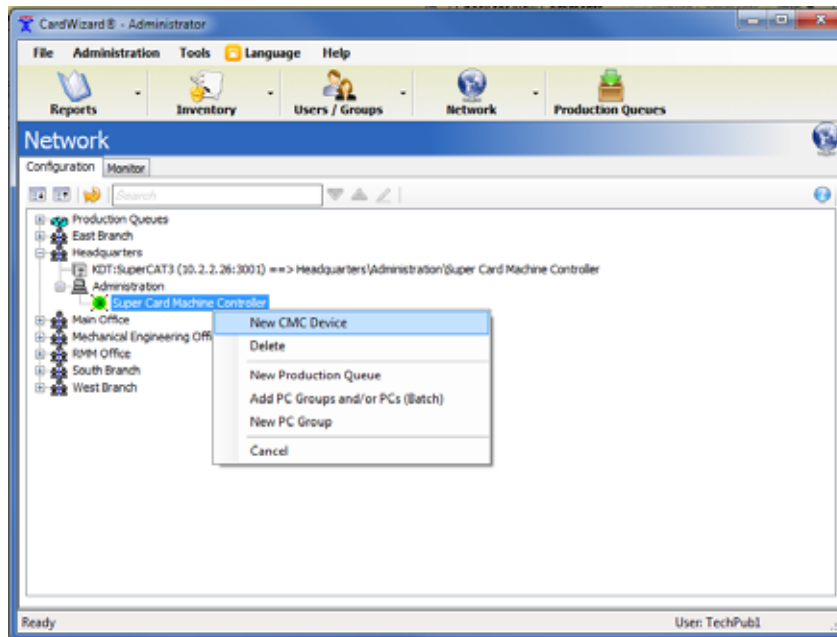
Before adding the CE870 system to the CardWizard network, make sure that you have met the following requirements:

- The IP address method is set to Static and the IP address, subnet mask, and gateway address have been entered. Refer to “Set a Static IP Address” in the printer’s *Installation and Administrator’s Guide*. Have the IP address available during setup.
- The magnetic stripe coercivity is set to High (HICO). Refer to “MagStripeGeneral” in the Printer Manager section of the printer’s *Installation and Administrator’s Guide*.
- The PC Group has been configured using CardWizard Administrator. Refer to your CardWizard documentation for more information.

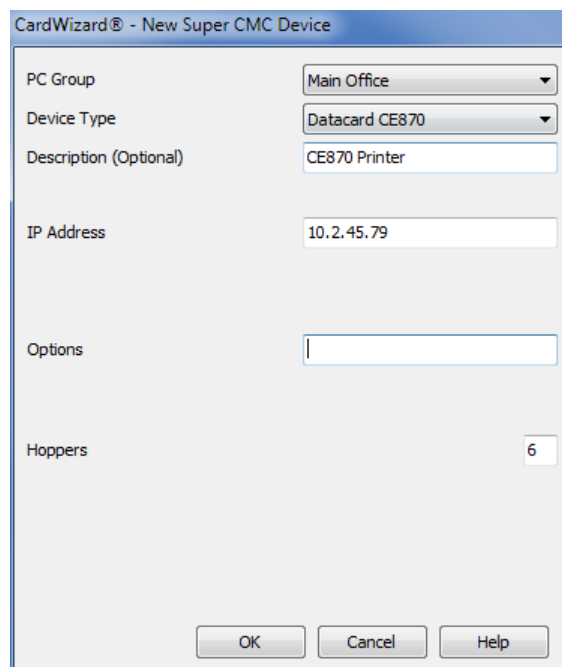
Do the following to add the printer to the CardWizard network:

1. Start CardWizard Administrator.
2. Select **Network > Configuration**.
3. Expand the PC Group where the CardWizard server is located.
4. Expand the PC Name where the CMC for the CardWizard server is located.

5. Under the PC Name, right-click **Super Card Machine Controller** and select **New CMC Device**.



The CardWizard **New SuperCMC Device** dialog box displays.



6. Specify the following information.

PC Group	Select the PC Group (branch) to which you want to add the CE870 system.		
Device Type	Select Datacard CE870 from the list.		
Description	Enter a brief description for the system. The description is used in the network diagram. This field is optional.		
IP Address	Enter the static IP address of the printer. Include the port number, using the format: x.x.x.x:9111. For example, 123.45.6.78:9111. (The printer uses the secure port 9111.)		
Options	<p>You can enter the following additional options for the printer. This field is optional.</p> <table border="1"> <tr> <td>Ribbon Management Code</td> <td> <p>You can specify one of the following ribbon management codes to manage print ribbon use.</p> <p>Note: The card format may include a ribbon usage option that allows you to define the ribbon use for each card format. If a ribbon usage is not specified, the ribbon management code entered here is used.</p> <ul style="list-style-type: none"> • CB—Limits ribbon use to one panel set for YMCKT-K and YMCKT-KT ribbons. The printer uses the color (YMC), black (K), and topcoat (T) panels on the front of the card. All graphics and text on the back of the card print using the black (K) panel. Topcoat is applied on the back of the card if it is available in the panel set. This is the default setting. • AA—Allows any type of printing on both the front and back of the card. Both sides of the card can use the YMC, K, and T panels. Specify this option when printing color on the back of the card. This option uses more than one panel set of the ribbon. </td> </tr> </table>	Ribbon Management Code	<p>You can specify one of the following ribbon management codes to manage print ribbon use.</p> <p>Note: The card format may include a ribbon usage option that allows you to define the ribbon use for each card format. If a ribbon usage is not specified, the ribbon management code entered here is used.</p> <ul style="list-style-type: none"> • CB—Limits ribbon use to one panel set for YMCKT-K and YMCKT-KT ribbons. The printer uses the color (YMC), black (K), and topcoat (T) panels on the front of the card. All graphics and text on the back of the card print using the black (K) panel. Topcoat is applied on the back of the card if it is available in the panel set. This is the default setting. • AA—Allows any type of printing on both the front and back of the card. Both sides of the card can use the YMC, K, and T panels. Specify this option when printing color on the back of the card. This option uses more than one panel set of the ribbon.
Ribbon Management Code	<p>You can specify one of the following ribbon management codes to manage print ribbon use.</p> <p>Note: The card format may include a ribbon usage option that allows you to define the ribbon use for each card format. If a ribbon usage is not specified, the ribbon management code entered here is used.</p> <ul style="list-style-type: none"> • CB—Limits ribbon use to one panel set for YMCKT-K and YMCKT-KT ribbons. The printer uses the color (YMC), black (K), and topcoat (T) panels on the front of the card. All graphics and text on the back of the card print using the black (K) panel. Topcoat is applied on the back of the card if it is available in the panel set. This is the default setting. • AA—Allows any type of printing on both the front and back of the card. Both sides of the card can use the YMC, K, and T panels. Specify this option when printing color on the back of the card. This option uses more than one panel set of the ribbon. 		

Options	Hopper Groups	<p>This applies only to printers with a multi-hopper. Use a hopper group when you load the same card stock into multiple input hoppers. CardWizard software can use all the grouped hoppers without relinking card formats.</p> <ul style="list-style-type: none"> • Cards are picked from the hoppers in the group in the order that the hoppers are listed in the group definition. • After a card is picked, the next card is picked from the next hopper in the group. • Empty hoppers in a group are skipped. If all the hoppers in a group are empty, an error is issued. • To define a hopper group to a card format, link the card format to any hopper in that group. • A hopper that is not defined as part of a group operates as a single, ungrouped hopper. <p>Define a hopper group as follows:</p> <ul style="list-style-type: none"> • (1,2,4, 5)—Defines a group with hoppers 1, 2, 4, and 5. Hoppers 3 and 6 are ungrouped hoppers. • (1,2,3)(4, 5,6)—Defines one group with hoppers 1, 2, and 3 and a second group with hoppers 4, 5, and 6.
	Smart Card	<p>If your printer includes a smart card reader, enter the IP address and port of the reader. The IP address and port are the same as that of the printer. For example, enter the smart card option as follows: DC1WIRE=123.45.6.78:9111.</p>
Hoppers	Enter the number of input hoppers installed on the printer.	



If you specify a ribbon management code, hopper groups, and a smart card option, always enter the smart card entry last.

7. Click **OK** to add the printer to the PC Group.



If you modify a printer option after the printer has been added to the PC group, you must restart the printer to activate the setting. Select **Network > Monitor > Devices** and click **Restart**.

8. Refer to your CardWizard documentation for complete information about how to define card formats and print cards.



Chapter 5: CR500 Instant Issuance System

5

This chapter provides instructions to define the Datacard® CR500™ Instant Issuance System to Datacard® CardWizard® Issuance Software.

Set Up CardWizard Issuance Software

To use the CR500 system, you must define the printer using CardWizard Administrator.

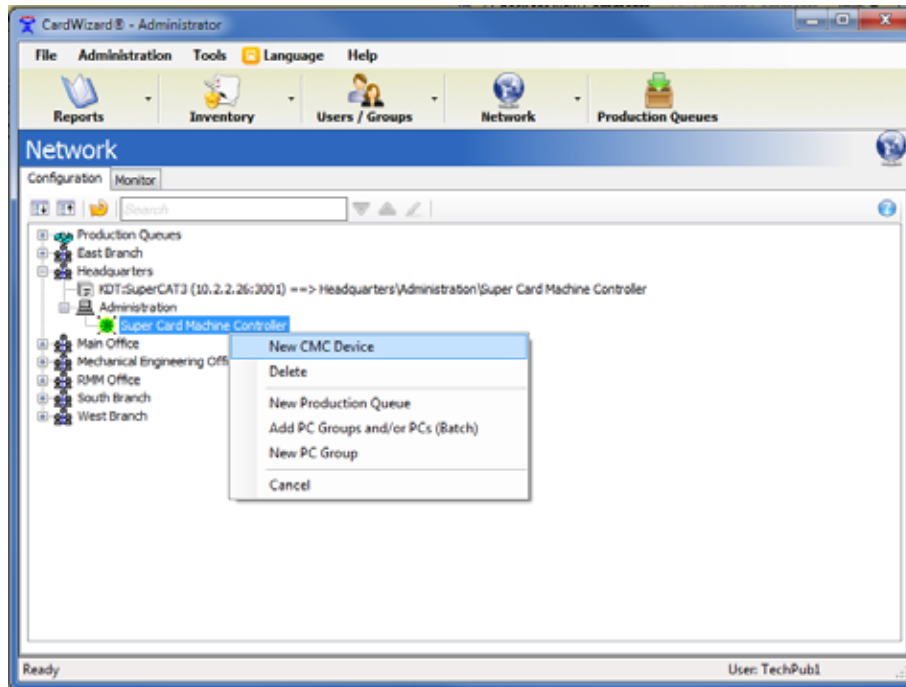
Before adding the CR500 system to the CardWizard network, make sure that you have met the following requirements:

- The IP address method is set to Static and the IP address, subnet mask, and gateway address have been entered. Refer to “Set a Static IP Address” in the printer’s *Installation and Administrator’s Guide*. Have the IP address available during setup.
- The magnetic stripe coercivity is set to High (HICO). Refer to “MagStripeGeneral” in the Printer Manager section of the printer’s *Installation and Administrator’s Guide*.
- The PC Group has been configured using CardWizard Administrator. Refer to your CardWizard documentation for more information.

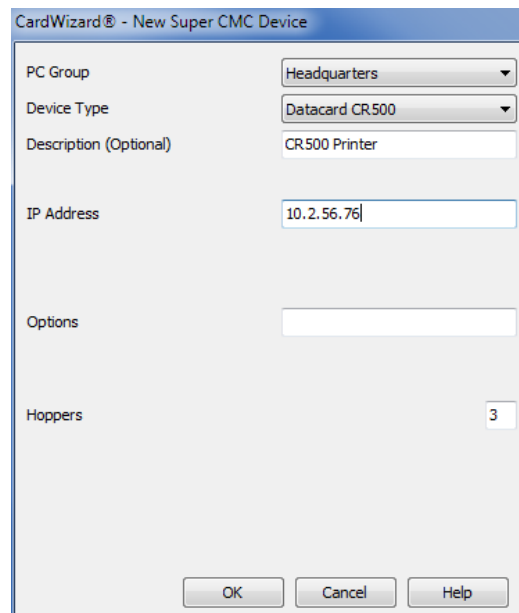
Do the following to add the printer to CardWizard:

1. Start CardWizard Administrator.
2. Select **Network > Configuration**.
3. Expand the PC Group where the CardWizard server is located.
4. Expand the PC Name where the CMC for the CardWizard server is located.

5. Under the PC Name, right-click **Super Card Machine Controller** and select **New CMC Device**.



The CardWizard **New SuperCMC Device** dialog box displays.



6. Specify the following information.

PC Group	Select the PC Group (branch) to which you want to add the CR500 printer.		
Device Type	Select Datacard CR500 from the list.		
Description	Enter a brief description for the printer. The description is used in the network diagram. This field is optional.		
IP Address	Enter the static IP address of the printer. Include the port number, using the format: x.x.x.x:9111. For example, 123.45.6.78:9111. (The printer uses the secure port 9111.)		
Options	<p>You can enter the following additional options for the printer. This field is optional.</p> <table border="1"> <tr> <td>Ribbon Management Code</td> <td> <p>You can specify one of the following ribbon management codes to manage print ribbon use.</p> <p>Note: The card format may include a ribbon usage option that allows you to define the ribbon use for each card format. If a ribbon usage is not specified, the ribbon management code entered here is used.</p> <ul style="list-style-type: none"> • CR—Limits ribbon use to one panel set for each card. The printer uses the color (YMC) panels on the front of the card. All graphics and text on the back of the card print using the black (K) panel. Peel-off (PO) is used only on the back. This is the default setting. • AB—Allows any type of printing on the front of the card, and only black (K) and peel-off (PO) on the back. The front of the card can use color (YMC), black (K), and peel-off (PO) panels, while the back is limited to only the K and PO panels. Specify this option when you want to use the K and PO panels on the front and color is not needed on the back. This option uses two panel sets for the card. • AA—Allows any type of printing on both the front and back of the card. Both sides of the card can use the YMC, K, and PO panels. Specify this option when printing color on the back. This option uses more ribbon. </td> </tr> </table>	Ribbon Management Code	<p>You can specify one of the following ribbon management codes to manage print ribbon use.</p> <p>Note: The card format may include a ribbon usage option that allows you to define the ribbon use for each card format. If a ribbon usage is not specified, the ribbon management code entered here is used.</p> <ul style="list-style-type: none"> • CR—Limits ribbon use to one panel set for each card. The printer uses the color (YMC) panels on the front of the card. All graphics and text on the back of the card print using the black (K) panel. Peel-off (PO) is used only on the back. This is the default setting. • AB—Allows any type of printing on the front of the card, and only black (K) and peel-off (PO) on the back. The front of the card can use color (YMC), black (K), and peel-off (PO) panels, while the back is limited to only the K and PO panels. Specify this option when you want to use the K and PO panels on the front and color is not needed on the back. This option uses two panel sets for the card. • AA—Allows any type of printing on both the front and back of the card. Both sides of the card can use the YMC, K, and PO panels. Specify this option when printing color on the back. This option uses more ribbon.
Ribbon Management Code	<p>You can specify one of the following ribbon management codes to manage print ribbon use.</p> <p>Note: The card format may include a ribbon usage option that allows you to define the ribbon use for each card format. If a ribbon usage is not specified, the ribbon management code entered here is used.</p> <ul style="list-style-type: none"> • CR—Limits ribbon use to one panel set for each card. The printer uses the color (YMC) panels on the front of the card. All graphics and text on the back of the card print using the black (K) panel. Peel-off (PO) is used only on the back. This is the default setting. • AB—Allows any type of printing on the front of the card, and only black (K) and peel-off (PO) on the back. The front of the card can use color (YMC), black (K), and peel-off (PO) panels, while the back is limited to only the K and PO panels. Specify this option when you want to use the K and PO panels on the front and color is not needed on the back. This option uses two panel sets for the card. • AA—Allows any type of printing on both the front and back of the card. Both sides of the card can use the YMC, K, and PO panels. Specify this option when printing color on the back. This option uses more ribbon. 		

Options	Hopper Groups	<p>Use a hopper group when you load the same card stock into multiple input hoppers. CardWizard software can use all the grouped hoppers without relinking card formats.</p> <ul style="list-style-type: none"> • Cards are picked from the hoppers in the group in the order that the hoppers are listed in the group definition. • After a card is picked, the next card is picked from the next hopper in the group. • Empty hoppers in a group are skipped. If all the hoppers in a group are empty, an error is issued. • To define a hopper group to a card format, link the card format to any hopper in that group. • A hopper that is not defined as part of a group operates as a single, ungrouped hopper. <p>Define a hopper group as follows:</p> <ul style="list-style-type: none"> • (1,2)—Defines a group with hoppers 1 and 2. Hopper 3 is an ungrouped hopper. • (1,3)—Defines a group with hoppers 1 and 3. Hopper 2 is an ungrouped hopper.
	Smart Card	<p>If your printer includes a smart card reader, enter the IP address and port of the reader. The IP address and port are the same as that of the printer. For example, enter the smart card option as follows: DC1WIRE=123.45.6.78:9111.</p>
Hoppers	Enter the number of input hoppers. The default is 3 for the CR500 printer.	



Be aware of the following if you specify one or more options:

- The CR500 printer supports only YMCK-PO (YMCK-I) ribbon.
- If you specify a ribbon management code, hopper groups, and a smart card option, always enter the smart card entry last.

7. Click **OK** to add the printer to the PC Group. .



If you modify a printer option after the printer has been added to the PC group, you must restart the printer to activate the setting. Select **Network > Monitor > Devices** and click **Restart**.

8. Refer to your CardWizard documentation for complete information about how to define card formats and print cards.



You can use the CardWizard Server Schedule to manage the power save function in the CR500 printer. Refer to [Chapter 6: "Server Schedule"](#) for information about setting up the server schedule.



Chapter 6: Server Schedule



This chapter provides instructions to use the CardWizard Server Schedule to manage the power save function used by retransfer printers.

Power Save Mode

You can set up the CardWizard Administrator Server Schedule to work with the power save mode feature of the CR825, CE875, and CR500 instant issuance systems.



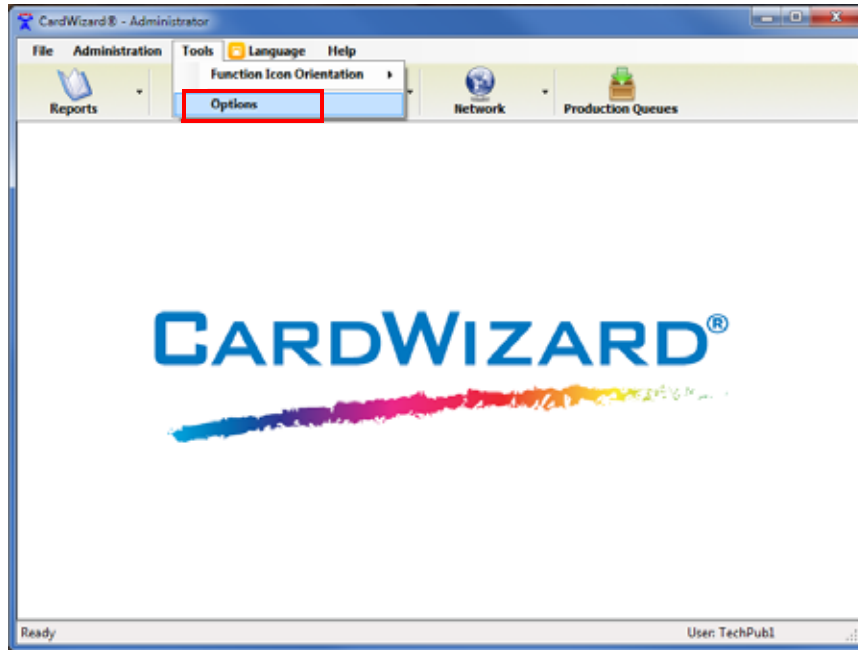
Setting up the Server Schedule is optional.

Power save mode normally powers off the heated retransfer roller in the printer after a specified number of minutes of no activity. CardWizard software can manage the power off time automatically to minimize printer response times during business hours, and to minimize power usage during non-business hours. You set the power save mode time value using Printer Manager (refer to the printer's *Installation and Administrator's Guide* for information about the Printer Manager settings).

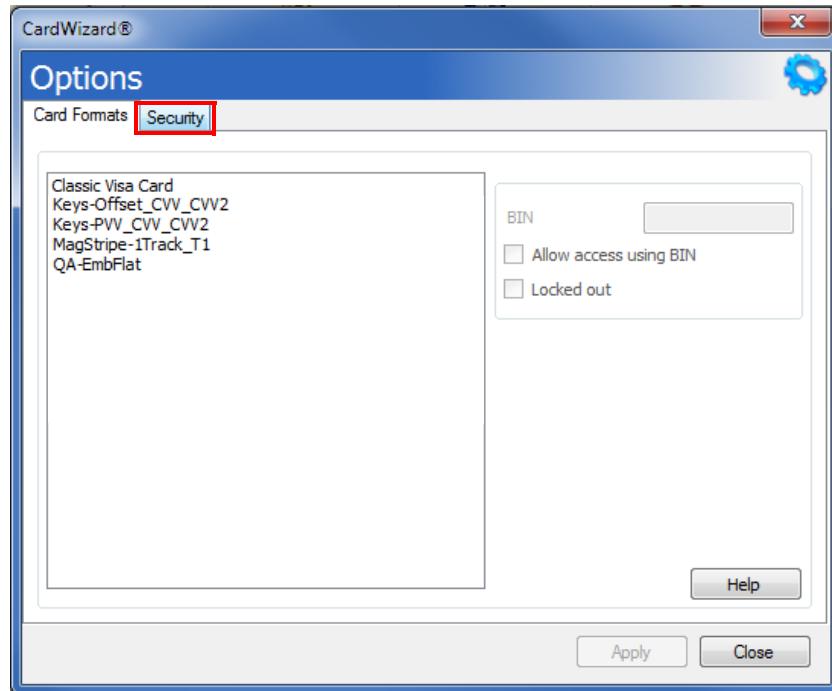
- CardWizard software sends a “disable power save” command to the printer when the server schedule starts the printer, or when a user starts or restarts the printer in CardWizard Administrator.
- CardWizard software sends an “enable power save” command to the printer when the server schedule stops the printer, or when the printer is stopped in CardWizard Administrator. When power save is enabled by CardWizard software, the printer powers off the retransfer roller after the number of minutes specified in Printer Manager.

Do the following to set the Administrator server schedule:

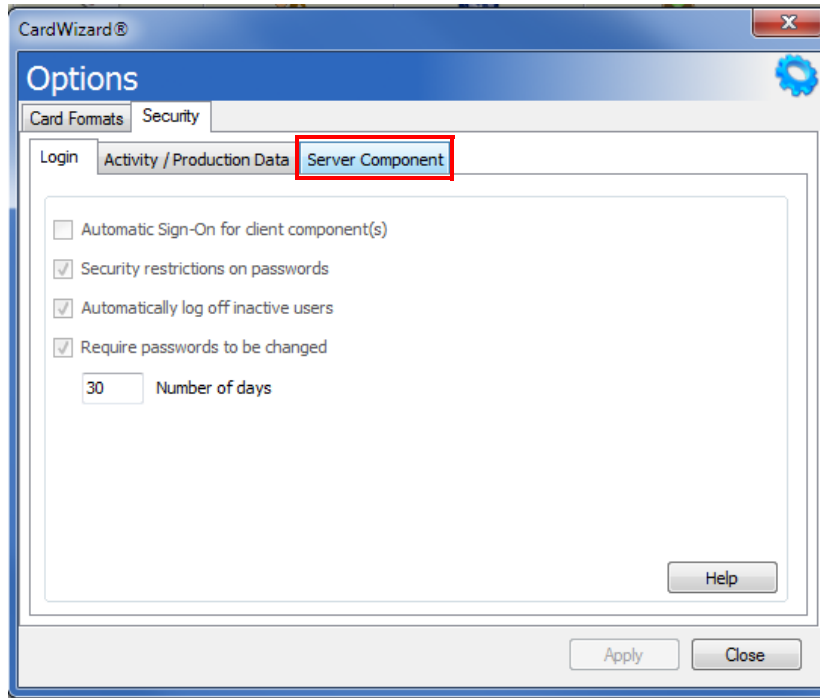
1. Start CardWizard Administrator.
2. Select **Tools > Options**.



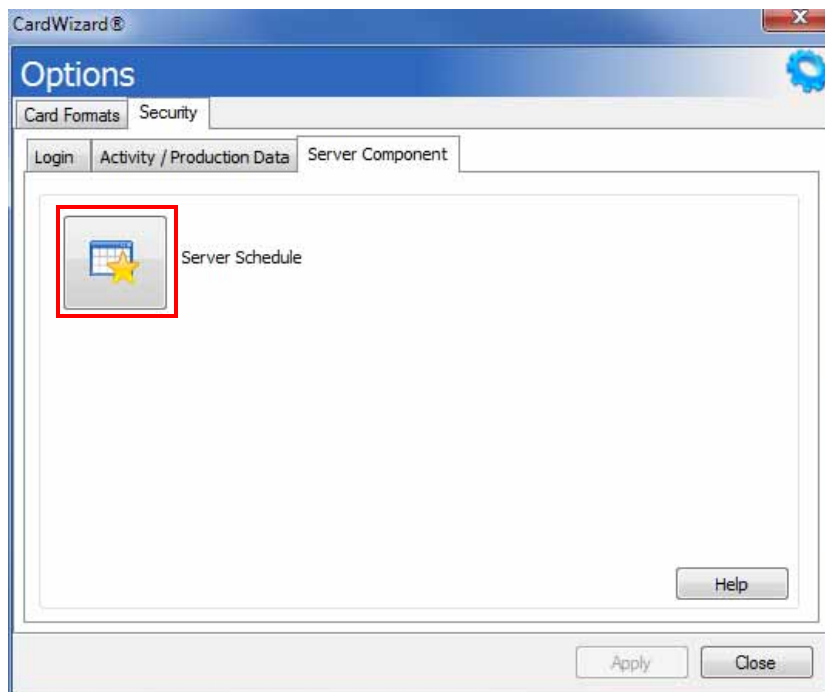
3. Click the **Security** tab on the Options window.



4. Click the **Server Component** tab.



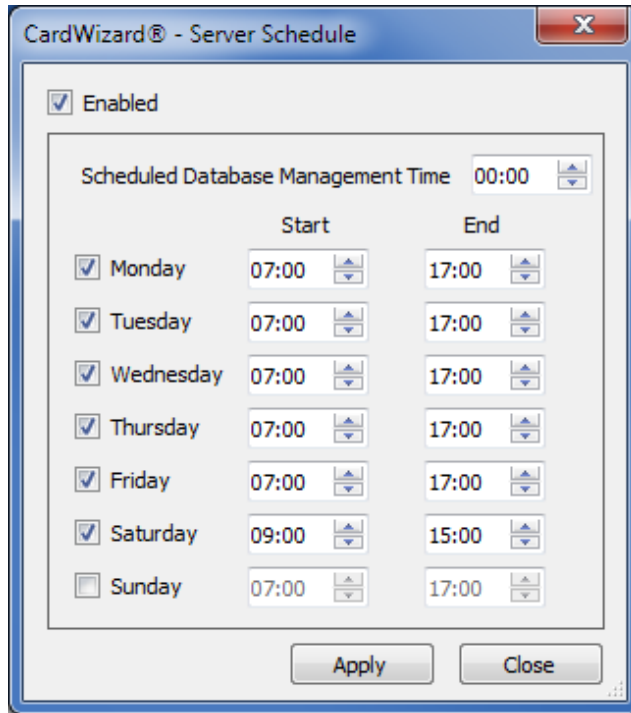
5. Click **Server Schedule**.



6. On the Server Schedule dialog box, click **Enabled** and then specify the start and end times that the printer should be available for each day of the week.



Use the time zone where the server is located, and take other time zones into account when specifying the times when the server is available.



7. Click **Apply** to save the schedule.



It can take several minutes for the retransfer roller to heat up after inactivity.

Refer to the *CardWizard Issuance Software Administrator User Manual* for more information.

